

# WONDERLAND



The New Zealand  
photographs of Whites Aviation

*Mike Peak*





Cape Keung

W. H. M.





Auckland

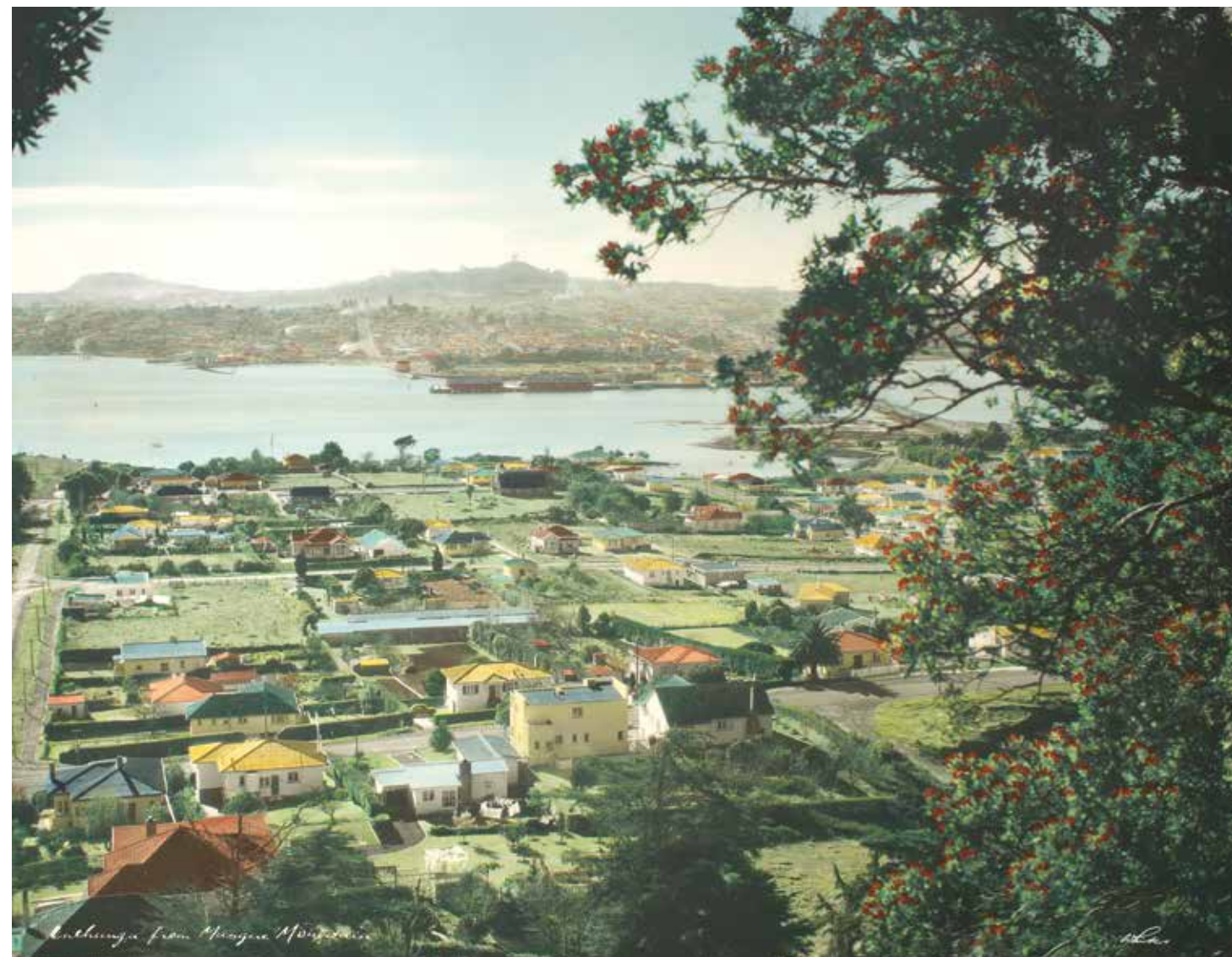
Whelan





*Mangere from Hillsborough, 1958*

The view from the Auckland suburb of Hillsborough across a calm Manakau Harbour toward Mangere, and Mangere Mountain.



*Onehunga from Mangere Mountain, 1956*

Thethen relatively undeveloped Auckland suburb of Mangere, looking back at Onehunga.

NEXT PAGE

*Whangamata, c. 1970*

Whangamata on the Coromandel Peninsula was already a popular holiday destination by 1970.





Whangamata

Whangamata









Mount Parnassus, N.Z.

W. H. L.









*Milford Sound, 1956*

A fishing boat at anchor in Milford Sound,  
with Mitre Peak behind.

[PREVIOUS PAGE](#)

*Milford Sound, 1958*

The classic view looking down Milford Sound,  
with waterfalls and Mitre Peak.